

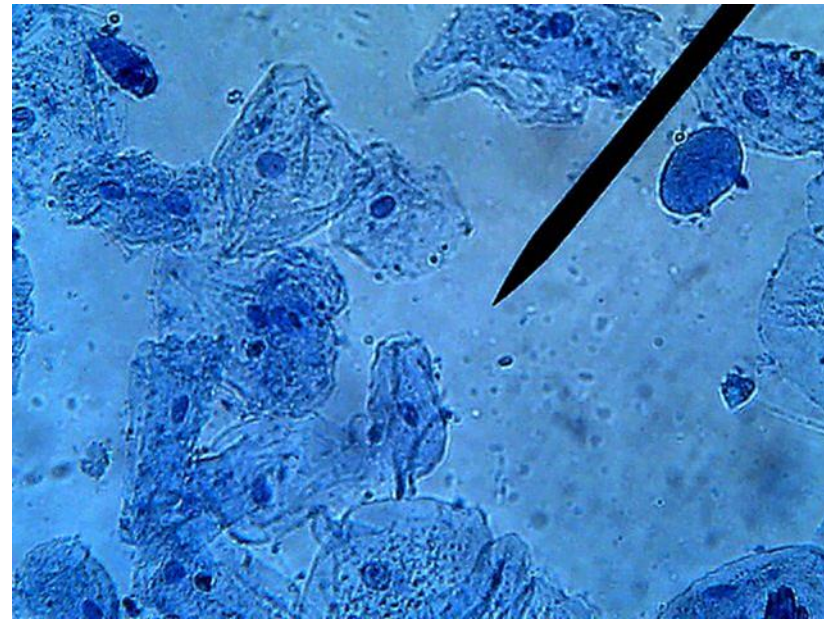
DO NOW:

Date: February 20, 2017

6.12A: Understand that all organisms are composed of one or more cells.

1. Get out your **Do Now sheet**
2. Copy down this week's **TEKS**
3. **Q?: All living (biotic) things are made of cells. What are cells?**

The picture to the right contains human cheek cells at 400x magnification, stained blue for contrast. The black pointer is part of the light microscope.

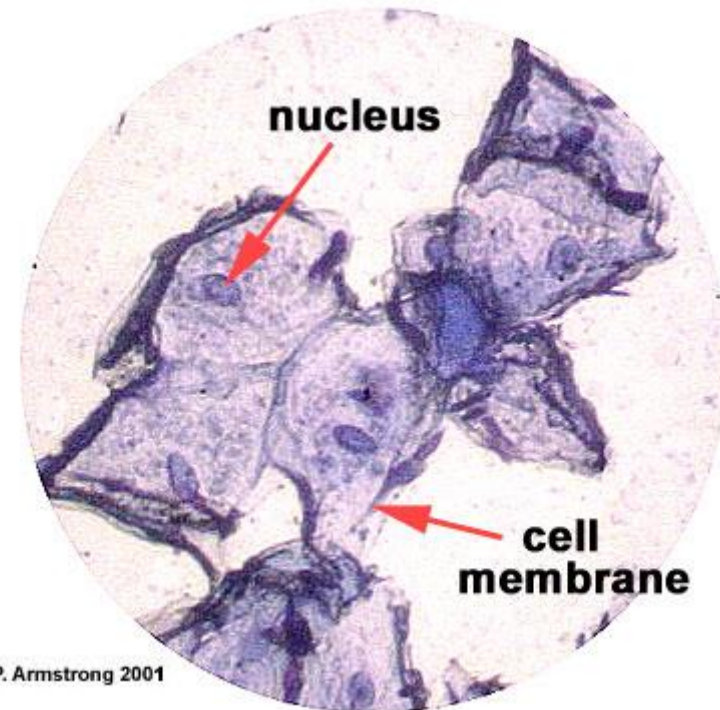


DO NOW:

Date: February 21, 2017

6.12A: understand that all organisms are composed of one or more cells.

1. Get out your **Do Now sheet**
2. Put your CB on your desk
3. Q?: **What do we call the organelle at the center of a cell that holds the genetic information (DNA)?**



DO NOW:

Date: February 22 – 23, 2017

6.12A: understand that all organisms are composed of one or more cells.

1. Get out your **Do Now sheet**
2. Put your CB on your desk
3. **Q?: What are the magnifying lenses that are attached to the revolving nosepiece of the light microscope called?**



DO NOW:

Date: February 24, 2017

6.12A: understand that all organisms are composed of one or more cells.

1. Get out your **Do Now sheet**
 2. Put your CB on your desk
 3. Q?: How do you calculate the magnification power of a light microscope?
- Turn in your Do Now TODAY!**

